



PVSS-UNICOS Module 3



Module – 2

- ➔ ■ integration of the application into an existing configured Data Server
 - Procedure
 - Commissioning
- Online backup



During the development

- Use the same PVSS system name and system number as the one used in the running DS
- Do not use the same name for the synoptic
- Do not use the same names for the WindowTree
 - Panel
 - Folder
- Do not use the same names for the TrendTree
 - Plot
 - Page
 - Folder



Procedure – 1

1. From the systemIntegrity run-time panel disable the configured PLCs
2. Stop all the OWS computers
3. Stop the MODBUS driver
4. Do an online backup of the project
5. Do a zip of all the folder of the project except db and log folder
6. Extract all the data from the current project and send then the LHC Logging
7. Unzip the new project folders into the project in the DS computer: panels, images, scripts, etc.
 - Existing files must not be overwritten



Procedure – 2

8. Import the new specification into PVSS
 1. Driver number must be the same for all PLC applications
 2. Archive can be share between different applications
 3. The configuration of the device data of previous project must not be overwritten
 - The first time, no message, Alarm, etc. exist will be updated
9. Set-up the UNICOS-MODBUS communication for the previous configured PLCs
10. Validate the devices of the old PLCs
11. Set-up UNICOS-MODBUS communication for the new PLCs
12. Validate the devices of the old PLCs



Procedure – 3

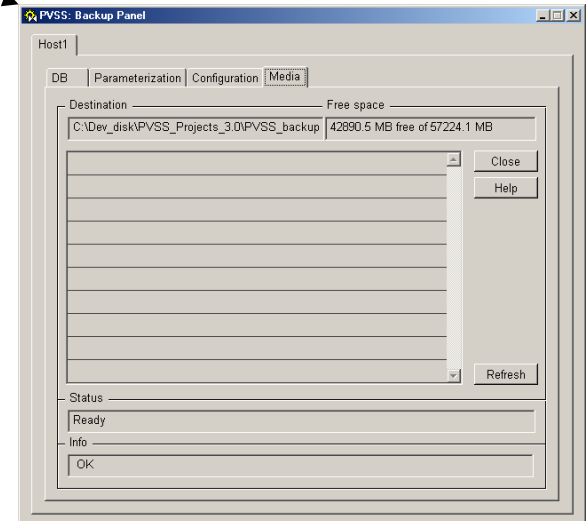
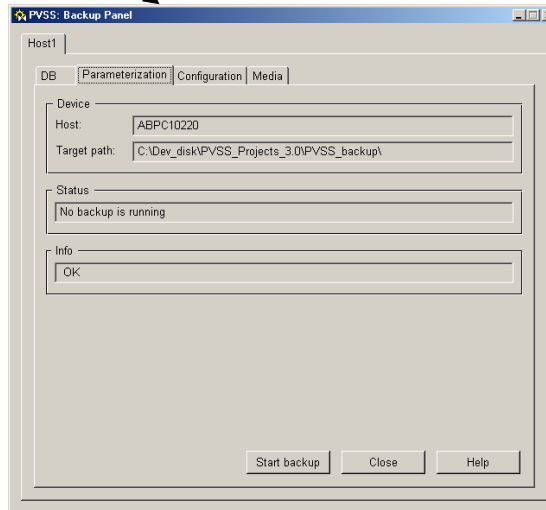
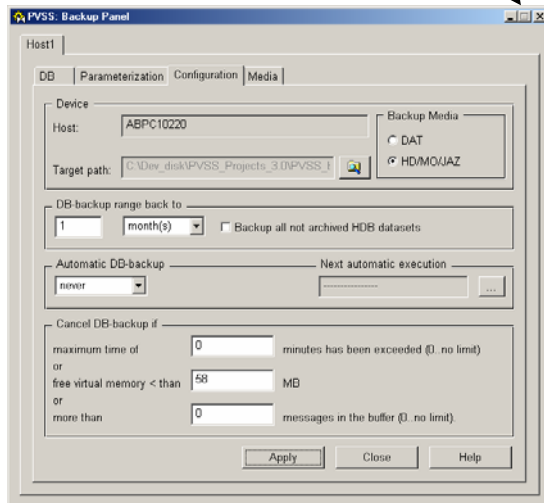
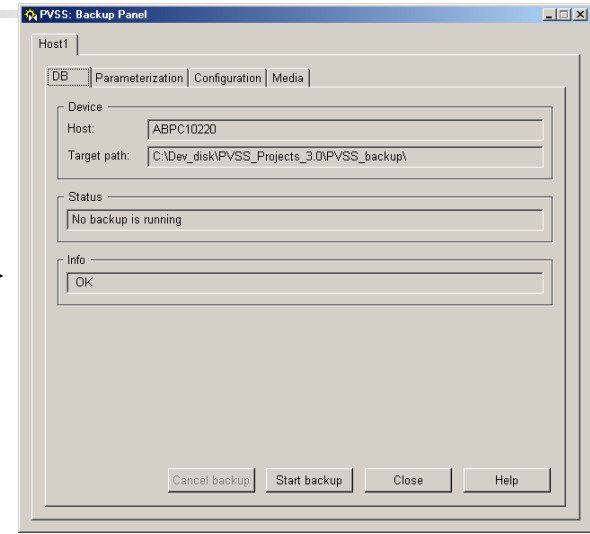
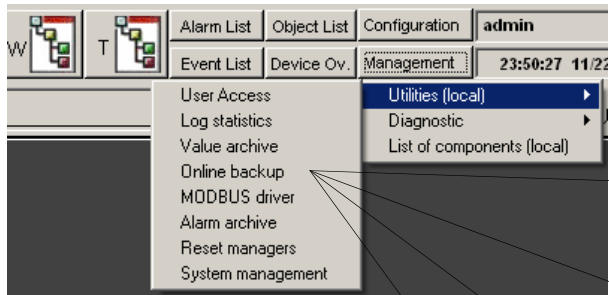
13. Set-up the UNICOS-MODBUS communication for the new PLCs
14. Validate the devices of the new PLCs one per one
15. Restore the WindowTree and TrendTree
 - Tool will be provided to import the hierarchy
16. Configure the systemIntegrity with the new archives and PLCs
17. Configure the application security with the new PLCs, archives and remote system (if any)
18. Modify if any the config of the devices
19. Modify the WindowTree and TrendTree if necessary
 - E.g.: do a new hierarchy, mix in the same hierarchy the synoptics of the new PLCs with the ones of the old PLCs, etc.
20. Do an online backup.



Module – 2

- integration of the application into an existing configured Data Server
 - Procedure
 - Commissioning
- ➔ ■ Online backup

Online backup





Practical work





Question?

